

# Hospital-reported COVID-19 Pediatric Admissions

## by Age Group and Census Region

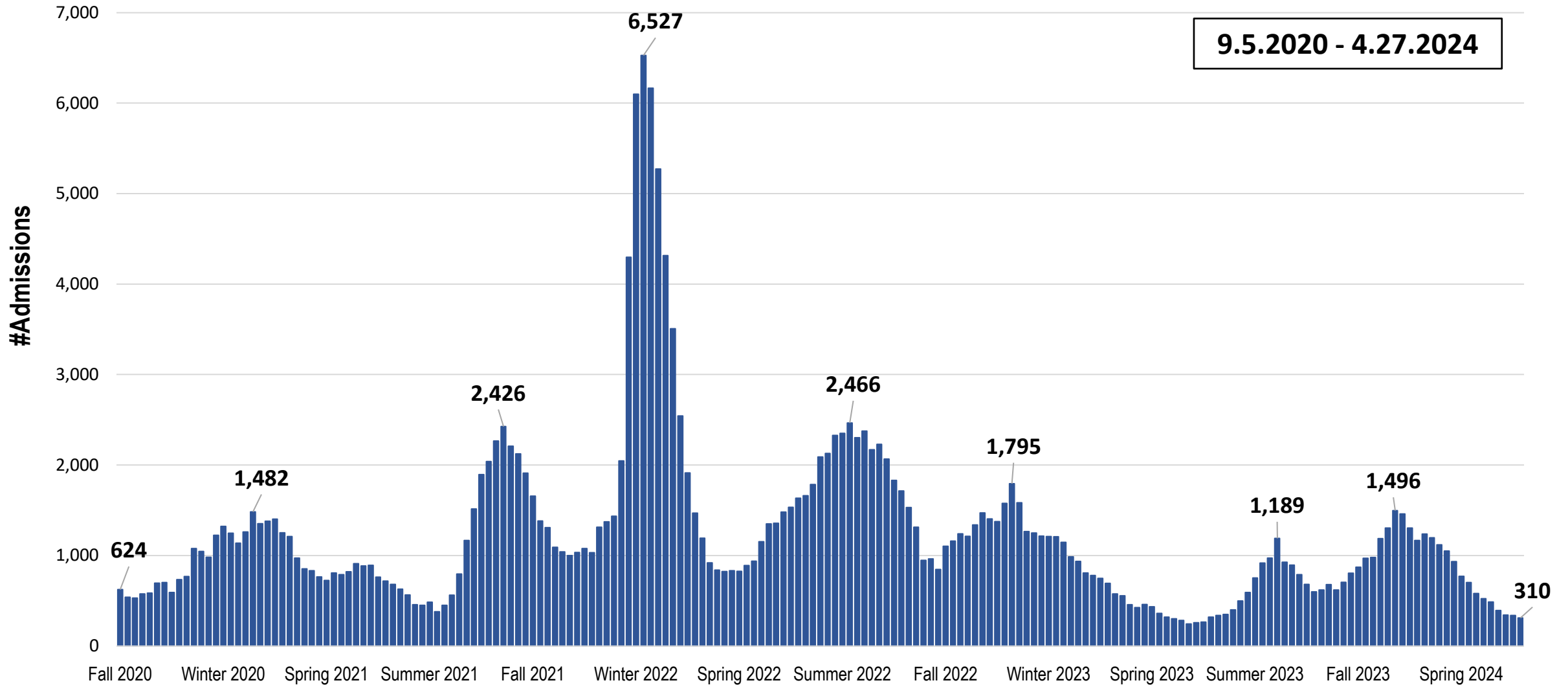
### \*September 2020 – April 2024\*

**Source:** AAP analysis of COVID-19 pediatric admissions based on the “COVID-19 Reported Patient Impact and Hospital Capacity by State Timeseries” published by the U.S. Department of Health & Human Services [ <https://healthdata.gov/Hospital/COVID-19-Reported-Patient-Impact-and-Hospital-Capa/g62h-syeh> ].

**Note:** A single-day surge from under 10 suspected COVID-related pediatric admissions to 3.3K on 12.15.2022 reported by Mississippi cannot be verified and is excluded from this report.

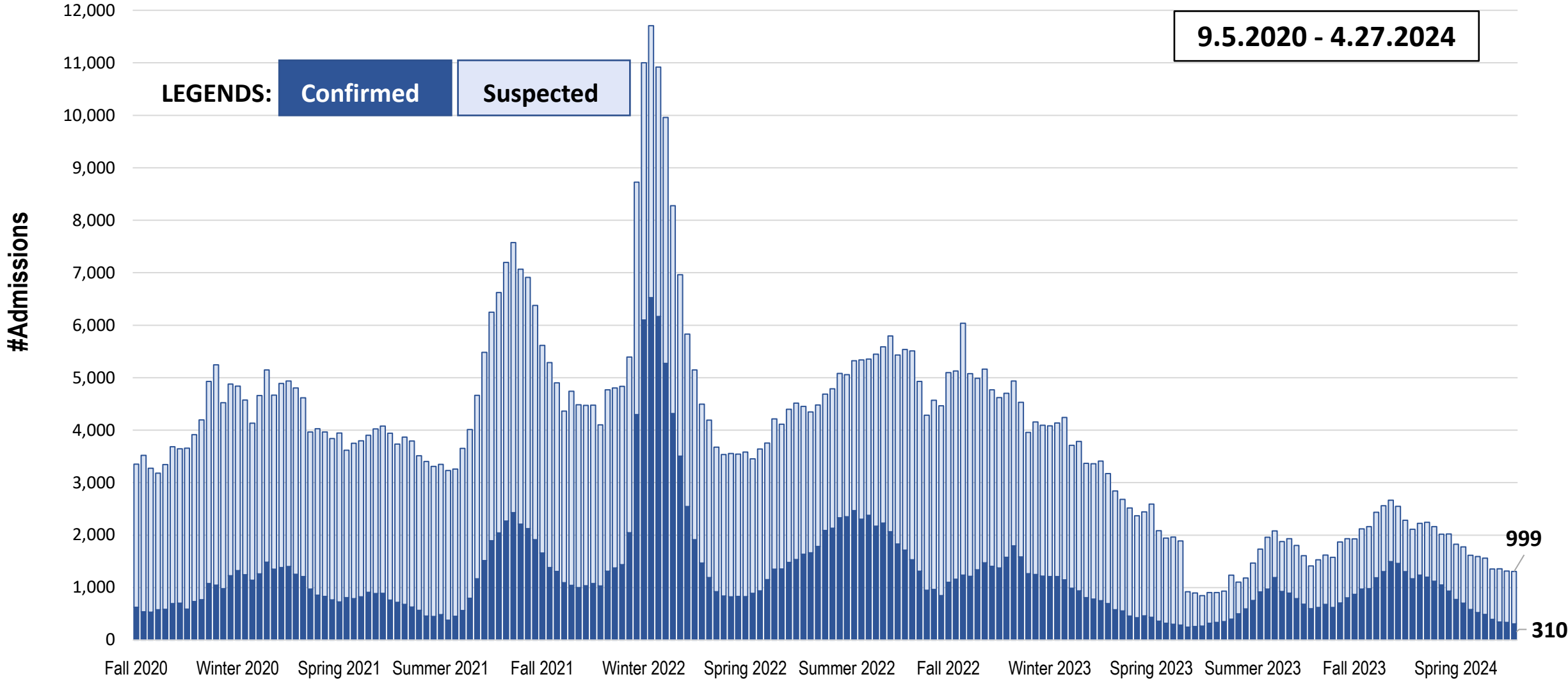
\* Beginning 5/1/2024, hospitals are no longer required to submit COVID-related hospitalizations. As a result, this report will no longer be updated.

# Confirmed COVID-19 Past-week Pediatric Hospital Admissions (Age < 18)



**Source:** AAP analysis of COVID-19 pediatric admissions based on the “COVID-19 Reported Patient Impact and Hospital Capacity by State Timeseries” published by the U.S. Department of Health & Human Services.

# Confirmed and Suspected COVID-19 Past-week Pediatric Hospital Admissions (Age < 18)



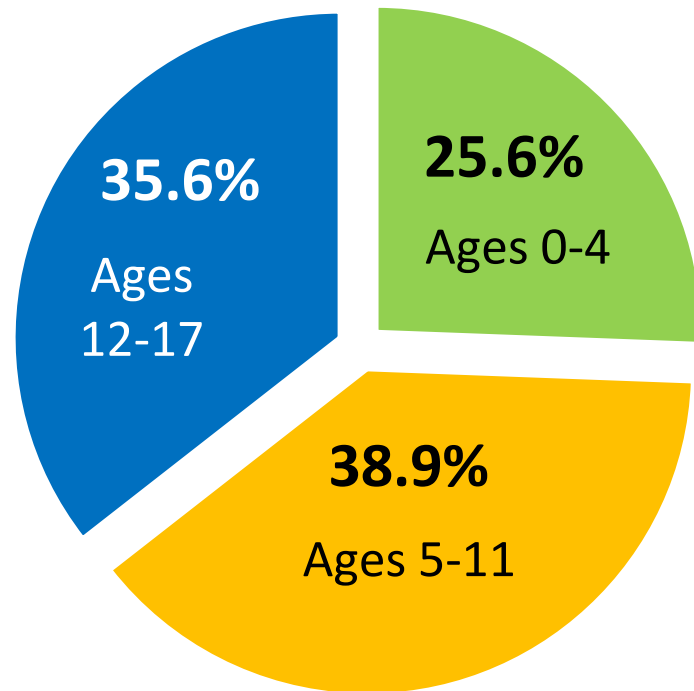
Source: AAP analysis of COVID-19 pediatric admissions based on the “COVID-19 Reported Patient Impact and Hospital Capacity by State Timeseries” published by the U.S. Department of Health & Human Services.

# Number of Confirmed and Suspected COVID-19 Pediatric Hospital Admissions September 2020 - April 2024

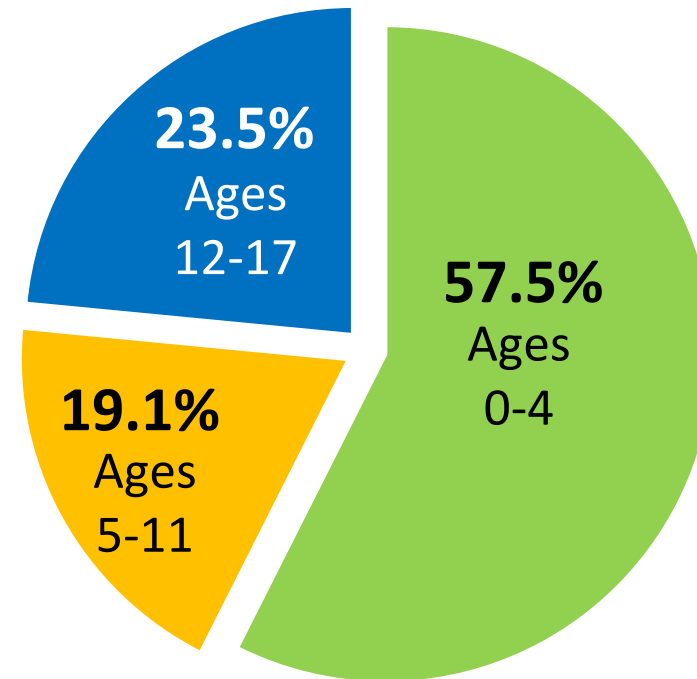
	Confirmed	Suspected	<i>Total Pediatric</i>
Fall 2020 (Sep-Nov)	9,451	41,015	50,466
Winter 2020/2021 (Dec-Feb)	16,098	44,039	60,137
Spring 2021 (Mar-May)	10,217	40,039	50,256
Summer 2021 (Jun-Aug)	13,027	44,915	57,942
Fall 2021	19,294	51,084	70,378
Winter 2021/2022	46,811	51,527	98,338
Spring 2022	14,063	36,094	50,157
Summer 2022	27,055	37,409	64,464
Fall 2022	17,265	49,585	66,850
Winter 2022/2023	17,494	39,614	57,108
Spring 2023	7,551	29,015	36,566
Summer 2023	5,520	10,464	15,984
Fall 2023	10,351	12,766	23,117
Winter 2023/2024	15,401	14,157	29,558
Spring 2024 (Mar-Apr)	4,448	9,264	13,712
<b>Total</b>	<b>234,046</b>	<b>510,987</b>	<b>745,033</b>

**Source:** AAP analysis of COVID-19 pediatric admissions based on the “COVID-19 Reported Patient Impact and Hospital Capacity by State Timeseries” published by the U.S. Department of Health & Human Services.

## US Child Population by Age Group

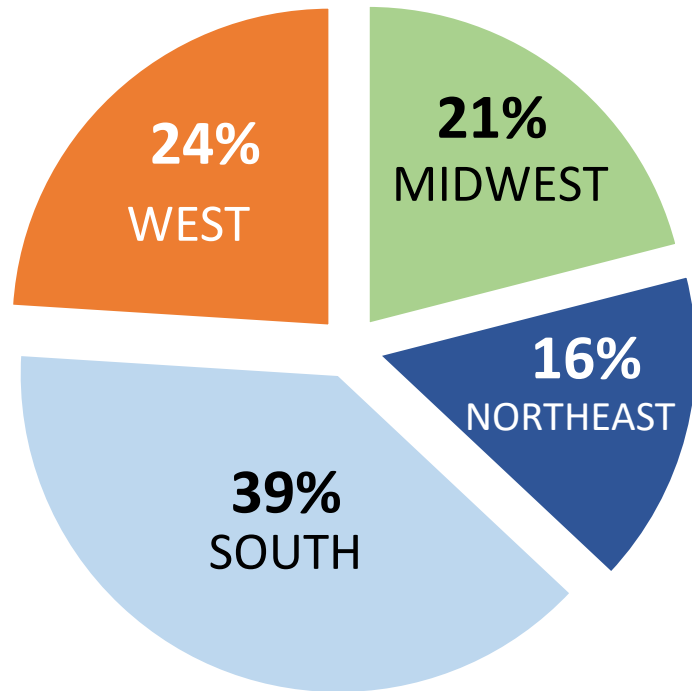


## COVID-19 Confirmed Pediatric Hospital Admissions by Pediatric Age Group, January 29, 2022 - April 26, 2024

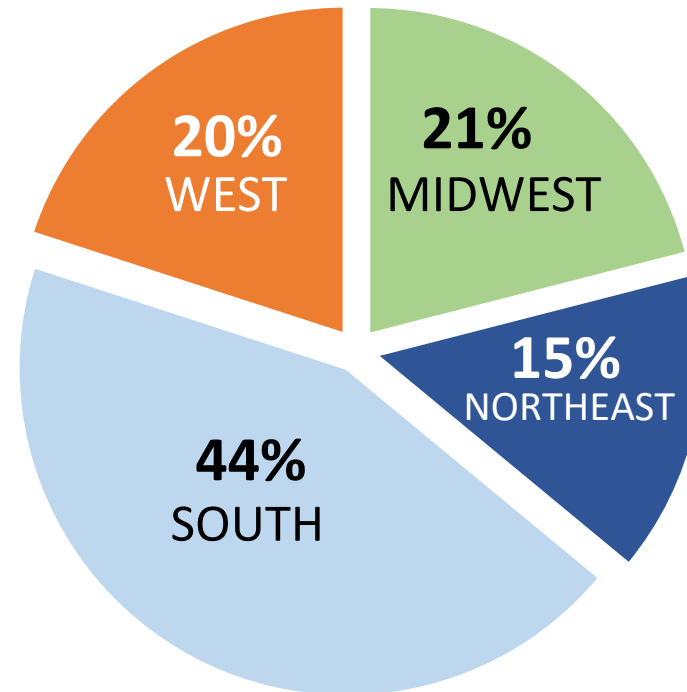


**Source:** AAP analysis of (i) COVID-19 pediatric admissions based on the “COVID-19 Reported Patient Impact and Hospital Capacity by State Timeseries” published by the U.S. Department of Health & Human Services, and (ii) Annual State Resident Population Estimates for 6 Race Groups (6 Race Alone Groups and Two or More Races) by Age, Sex, and Hispanic Origin: April 1, 2020 to July 1, 2021 (SC-EST2021-ALLDATA6), US Census Bureau.

## US Child Population by Region



## COVID-19 Confirmed Pediatric Hospital Admissions by Region, September 2020 - April 2024



**Source:** AAP analysis of (i) COVID-19 pediatric admissions based on the “COVID-19 Reported Patient Impact and Hospital Capacity by State Timeseries” published by the U.S. Department of Health & Human Services, and (ii) Annual State Resident Population Estimates for 6 Race Groups (6 Race Alone Groups and Two or More Races) by Age, Sex, and Hispanic Origin: April 1, 2020 to July 1, 2021 (SC-EST2021-ALLDATA6), US Census Bureau.

For more information, please contact  
[Dave Prentice, MS](#)  
in AAP, Research